

# POWER SUPPLY

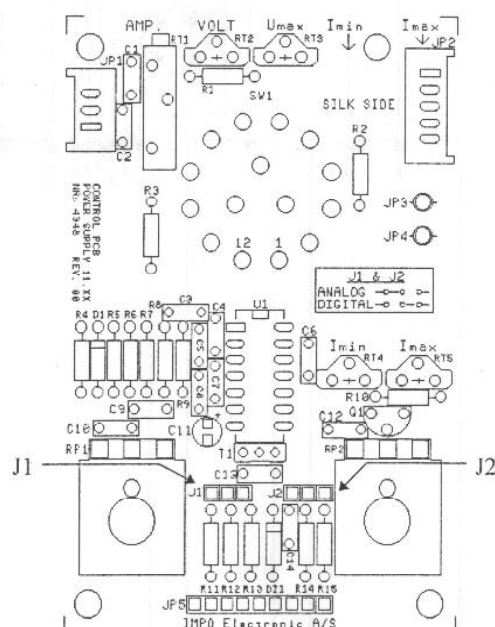
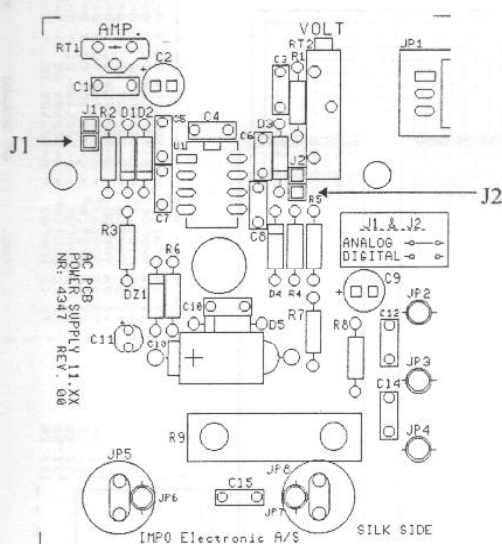
## 11.XX

11.17  
11.18  
11.19  
11.20  
11.22  
11.68  
11.69  
11.71  
11.72  
11.73  
11.74

### IMPO Electronic A/S

Vagtelvej 1-3  
5100 Odense C  
DK Denmark  
TLF. 66131409  
FAX. 66139077

Jumpersetting  
Power Supply 11.XX

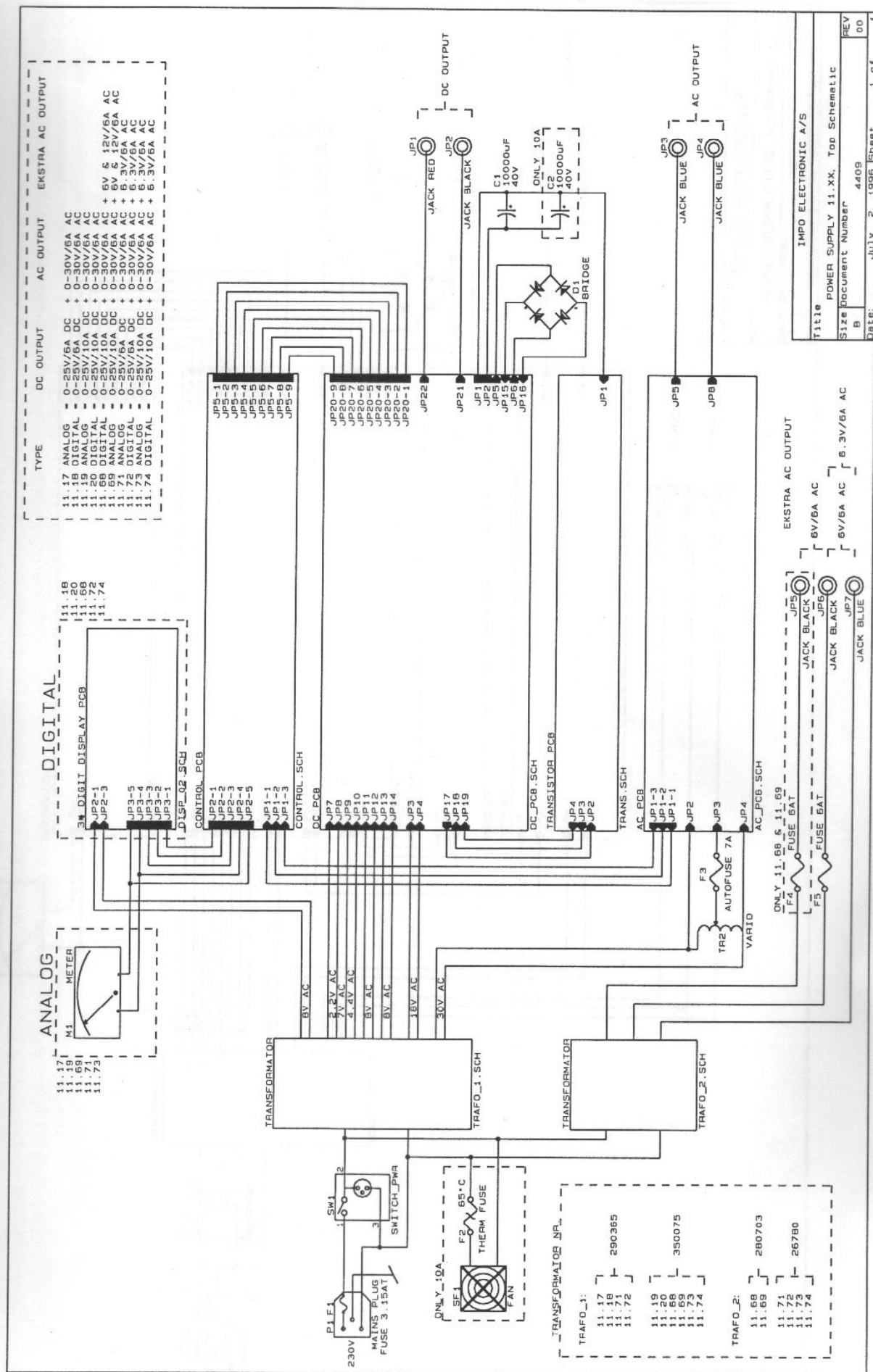


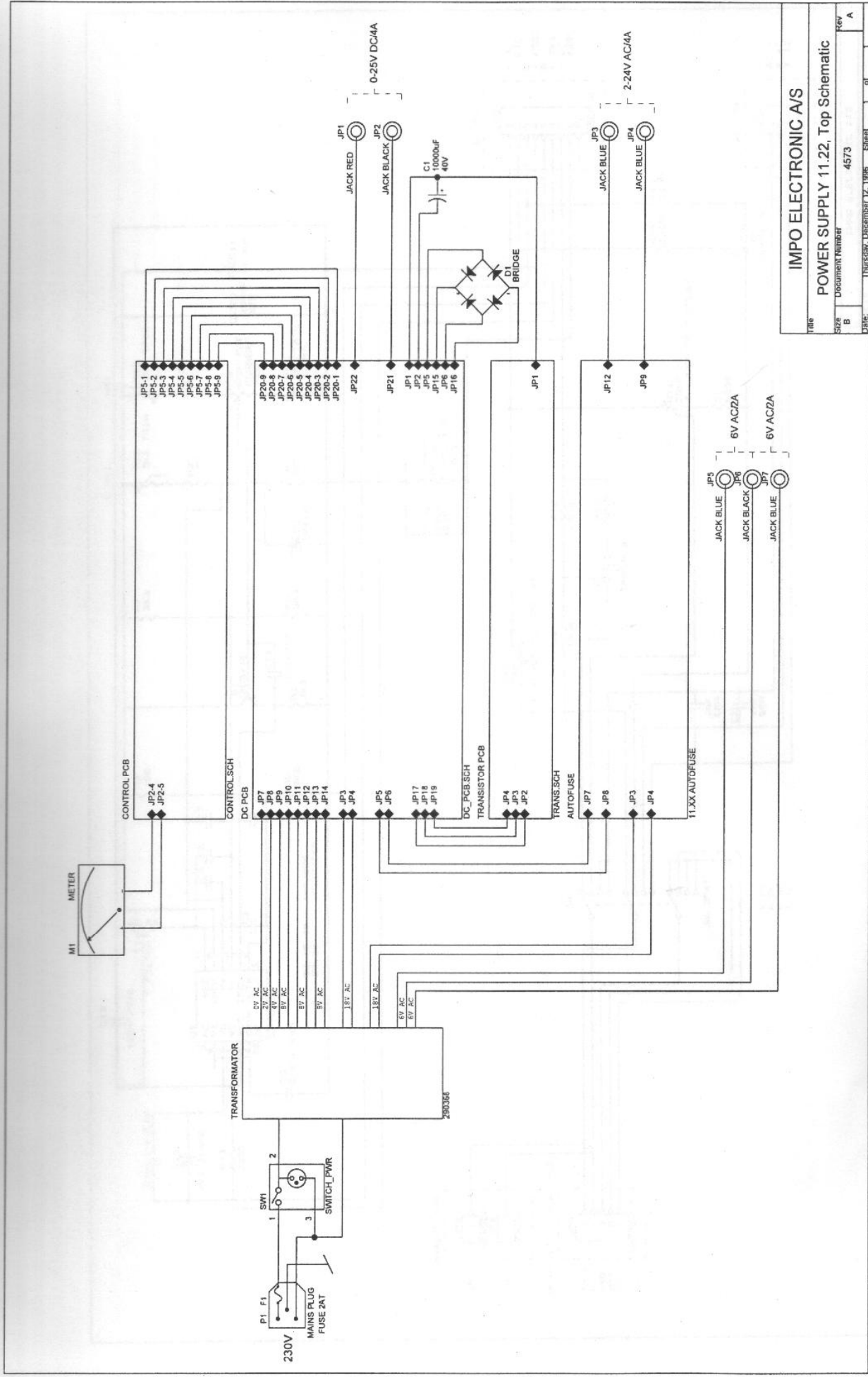
**AC PCB :**

	J1 & J2
11.17	
11.18	
11.19	
11.20	
11.68	
11.69	
11.71	
11.72	
11.73	
11.74	

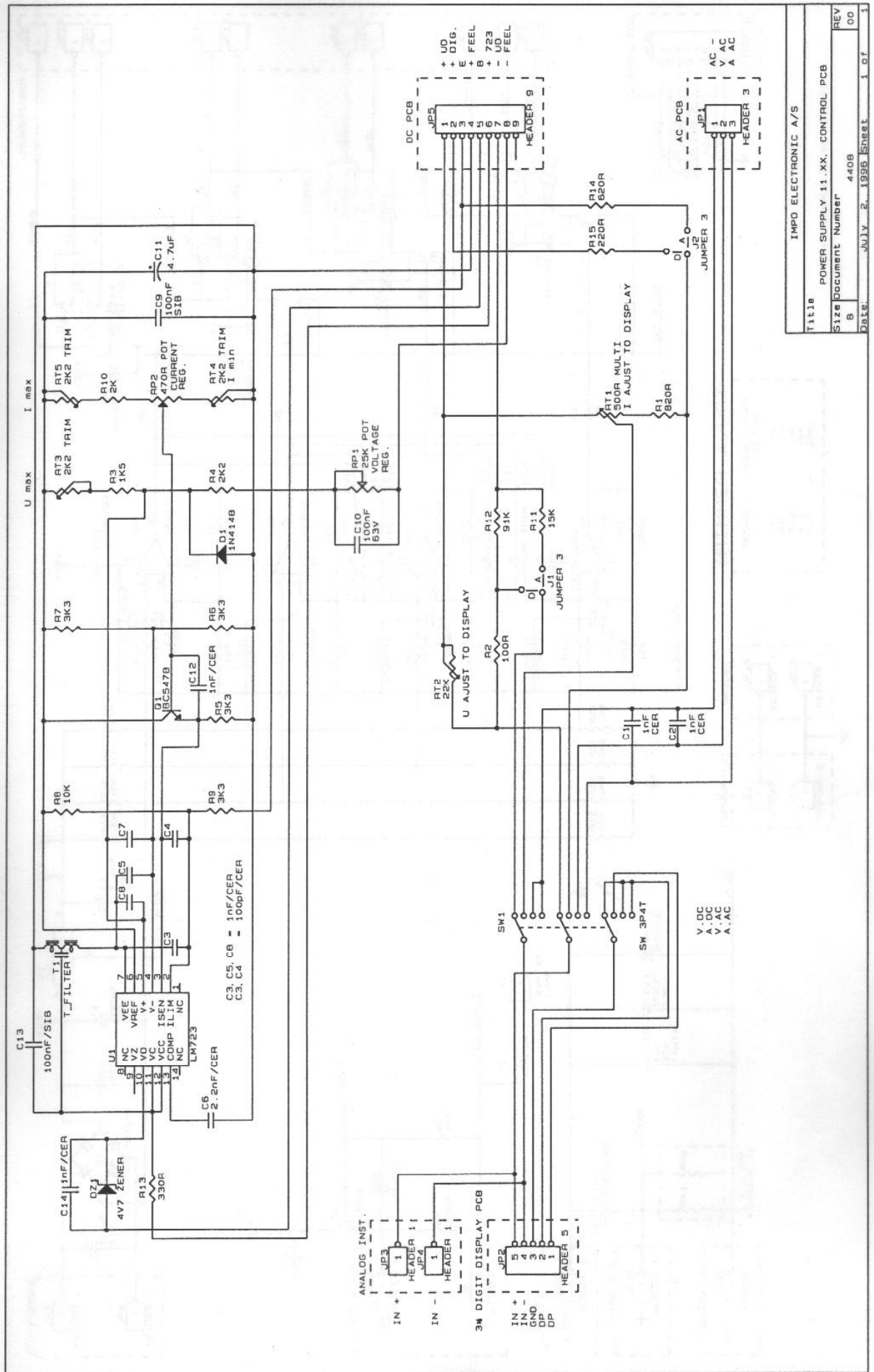
**CONTROL PCB :**

	J1 & J2
11.17	
11.18	
11.19	
11.20	
11.68	
11.69	
11.71	
11.72	
11.73	
11.74	

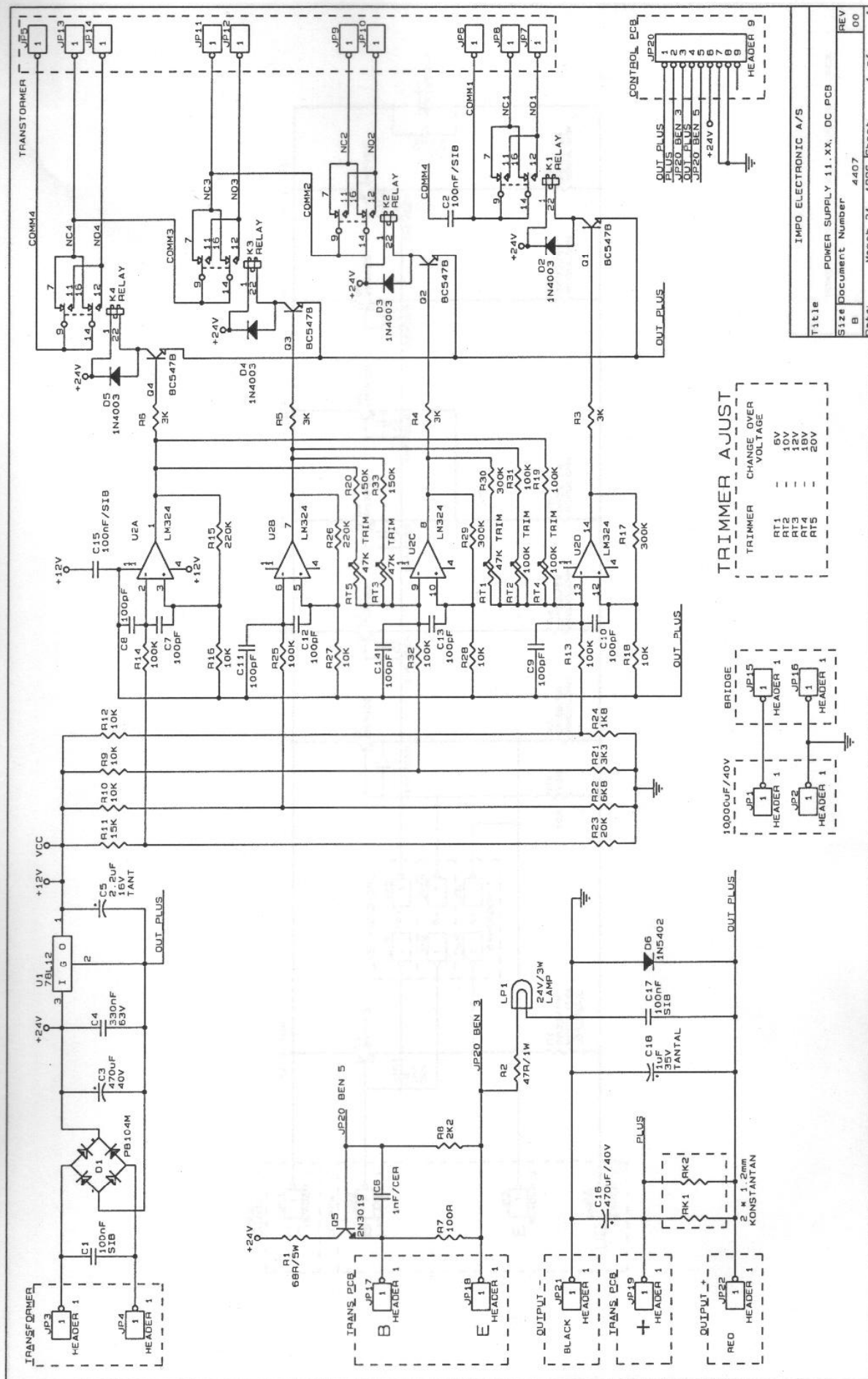




IMPO ELECTRONIC A/S			
POWER SUPPLY 11.22, Top Schematic			
Title	Size	Document Number	Rev
B	B	4573	A
Date	Thursday, December 12, 1996	Sheet	of



IMPO ELECTRONIC A/S	
Title	POWER SUPPLY 11.XX. CONTROL PCB
Size	Document Number 4408
REV	00
Date	JULY 2, 1995 Sheet 1 of 1

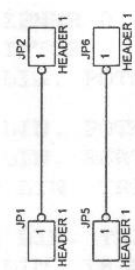












IMPO Electronic A/S			
POWER SUPPLY 11.XX, AUTOFUSE			
size	Document Number	4571	rev
B			A
Date:	Thursday, December 12, 1996	Sheet	of